

# 2023 CIYC Notice of Race & Sailing Instructions

Race Calendar.....	2
Regular Series.....	2
Special Events.....	2
Notice of Race & Sailing Instructions.....	3
Part A: General Sailing Instructions.....	3
Part B: Spring, Summer, and Fall Series.....	6
Part C: Frostbite Series.....	7
Part D: Long Distance Series.....	8
Part E: Single Handed Race.....	9
Part F: Sunset Race.....	10
Part G: Odd Couple Race.....	11
Part H: CIYC Challenge.....	12
Appendix A: CIYC Race Courses.....	13
CIYC Mark Locations.....	13
Spring, Summer, Fall, Frostbite, Sunset Courses.....	14
Challenge Courses.....	15
Appendix B: Awards.....	16
Performance Awards.....	16
Nominated Awards.....	17

## Race Calendar

### Regular Series

<b>Race Series</b>	<b>Dates</b>
Spring Series	Wednesdays, May 10 to June 21 (7 races)
Summer Series	Wednesdays, June 28 to August 9 (7 races)
Fall Series	Wednesdays, August 16 to September 27 (7 races)
Frostbite Series (new)	Sundays, October 1, October 8, October 15 (6 races)
Long Distance Series (new)	Sundays, May 28, June 25, July 30, August 27, Sept 24 (5 races)

### Special Events

<b>Event</b>	<b>Date</b>	<b>Description</b>
Racing rules for Club Races	April 12th, 7:00 PM	Review of the racing rules of sailing, and how they apply to common situations encountered in club racing
Racing for Beginners	April 19th, 7:00 PM	Tactics, strategies, and other helpful information for anyone new to racing.
How to run a race	May 3rd, 7:00 PM	A walk through of how to be a successful race committee
Sail Measurement & Skippers Meeting	April 23rd, 1:00 PM	Measure sails, skippers meeting for all series races, Q&A for sailing instructions
Silver Hair Cup Single Handed Race (new)	Fall Sunday, June 11	Special instructions to be issued Race to Kingsville harbour and back, single handed
Maple Leaf Regatta	July 8th	Special instructions to be issued
Sunset Race (new)	August 18th	Around-the-marks race, start at 8:30 PM and finish in the dark
Double Handed Race (new)	Sunday, September 17	Race to Colchester double-handed
Labour Day Regatta	September 2, 3	Special instructions to be issued
CIYC Challenge (new)	May 1 to October 31	Open challenge race
Awards Night	End of November	Awards for the season

# Notice of Race & Sailing Instructions

## Part A: General Sailing Instructions

These instructions apply to all races, unless changed in an event-specific instruction.

### 1. Rules

1.1 Races will be governed by *The Racing Rules of Sailing 2021-2024 (RSS)* and the prescriptions of Sail Canada

### 2. Eligibility & Entry

2.1 Eligibility is open to all CIYC boats, or any non-CIYC boat from with proof of insurance submitted to the CIYC Race Director.

2.2 All boats should have a valid PHRF certificate from PHRF-LE or EC-PHRF. Boats which do not have a valid certificate will be assigned a rating based on PHRF-LE, EC-PHRF, or other rating sources at the determination of the CIYC Race Director.

2.4 All boats shall be scored in the JOG class unless they notifying the Race Director prior to the first race in a series. Boats may change class at the start of each series or event by informing the race director prior to the first race in a series or event.

2.5 Racing shall be offered in the following classes for Spring, Summer, Fall, and Frostbite series:

- PHRF, with FS PHRF rating
- JOG<sup>1</sup> A, with a NFS PHRF rating less than 200
- JOG B, with a NFS PHRF rating greater than 200

2.5 Racing shall be offered in the following classes for all other events:

- PHRF, with FS PHRF rating
- JOG A, with a NFS PHRF rating

### 3. Changes to Sailing Instructions

3.1 Any changes to the sailing instructions or schedule of races will be posted 24 hours before they take effect on the CIYC website, and on the official notice board.

### 4 Communication with Competitors

4.1 Notices to competitors will be posted on the official notice board opposite the washroom doors of the CIYC clubhouse, and on the CIYC website.

4.2 Race committees will use VHF channel 72

### 5. Signals Made Ashore

5.1 Signals ashore will be signaled from the CIYC flag staff

5.2 When flag "AP" is displayed ashore, the warning signal will be made not less than 30 minutes after its removal

---

<sup>1</sup> "Jib or Genoa"

## 6. Schedule of Races

6.1 Races are scheduled as outlined in the Race Calendar

6.2 For the Spring, Summer and Fall series the warning signal for the first start will be 7:00 PM

6.3 For the Sunday and Frostbite series the warning signal for the first start will be 1:00 PM

6.4 For the Long Distance series the warning signal for the first start will be 11:00 AM

## 7. Starts and Finishes

7.1 Races will be started using RSS 26, and RSS 30.1 shall be in effect for all starts.

7.2 The start and finish line shall be between the start mark and the mast of the race committee boat unless otherwise indicated

## 8. Race Marks

8.1 Race marks are yellow private marks, navigation marks, or other distinguishing marks as noted in the sailing instructions.

8.2 Unless noted otherwise, marks shall always be rounded to port

## 9. Race Conditions

9.1 Races shall not be run if the average wind speed is less than 3 knots greater than 25 knots in the hour before the warning signal, or in the event of imminent thunderstorms.

## 10. Reporting to the race committee

10.1 Each boat shall report to the race committee prior to the preparatory signal by sailing to leeward of the race committee boat on a starboard tack and hailing their sail number.

10.2 Boats which fail to report to the race committee will be scored DNC

## 11. Discontinued Races

11.1 In the event that an abandonment is signaled in accordance with RRS 32.1 after one or more boats in a fleet have finished, the race shall be considered discontinued, and not abandoned. Boats which have not yet finished a race when it is discontinued shall be awarded points for the number of finishers plus one. Such boats shall be scored "OCF" (On Course Finish). This modifies RRS 32.1 in accordance with RRS 86.1(b)

## 12 Race Committee

12.1 Each competitor may be required to volunteer to act as race committee boat for one or more races in each series in which they plan to participate.

12.2 For a race in which a competitor acts as race committee boat that competitor shall be deemed the "Race Committee" for that race.

12.3 Boats shall be scored "RC" for any race in which they act as race committee and be scored their series average score, excluding RC scores.

## 13 Protests and Requests for Redress

13.1 Hearing request forms are available on the CIYC website and must be submitted to the Race Director before the protest time limit.

13.2 For all races, the protest time limit is 2 hours from the time the race committee boat returns to the harbour, or 2 hours after the last boat finishes racing, whichever is later.

13.3 The Race Director shall notify all competitors of any hearings in which they are parties or are named as witnesses as soon as practicable and arrange a time and location for hearings

13.4 Notices of protests by the CIYC Race Committee or protest committee will be posted to inform boats under RRS 61.1(b).

13.5 RSS Appendix T shall apply (Arbitration)

13.6 The protest committee shall consist of the CIYC Race Committee, or if members of the CIYC Race Committee are party to the protest other CIYC members agreed to by the protest parties replace them on the protest committee, or other such members as designated by the race director if no such agreement can be found.

## 14 Scoring

14.1 Each series will be scored as provided in Appendix A of the RSS, with PHRF corrected times

14.2 RSS A2 is modified as follows:

- a) For each series if fewer than 5 races are completed then no scores shall be excluded.
- b) For the Long Distance Series, if fewer than 4 races are completed then no scores shall be excluded.

14.3 RSS 5.3 shall apply

14.4 Boats which receive a DSQ or DNE will be scored points equivalent to a DNC. This modifies RSS A5.3

14.5 Boats shall be scored their average points for any race for which they act as a race committee boat, excluding races where they act as a race committee boat

14.6 Races will be scored using time-on-distance, using published distances for the courses

## 15. Manual Power

15.2 Power-assisted winches and other devices are permitted for adjusting running rigging (this changes RRS 52)

## Part B: Spring, Summer, and Fall Series

### 1 The Course

1.1 The race committee shall signal the designated course from Appendix A over VHF, not later than 5 minutes before the warning signal.

### 2 The Start

2.1 The start order is:

- JOG B, using numeral pennant 1 as the class flag
- JOG A and PHRF in a combined start, using numeral pennant 2 as the class flag

2.2 There will be a 1 minute delay between the two starts.

### 3. Time Limits

3.1 All boats which have not started within 15 minutes of their start signal shall be scored DNS

3.2 The first boat must reach the windward mark within an hour, and finish the race within 2 hours, or the race shall be abandoned

3.3 RSS 35 is modified by: "Boats failing to finish within 90 minutes of the first boat in their class will be scored Did Not Finish"

## Part C: Frostbite Series

### 1 The Course

1.1 The race committee shall signal the designated course for each from Appendix A over VHF, not later than 5 minutes before the warning signal for each race.

### 2 The Start

2.1 The start order is:

- JOG B, using numeral pennant 1 as the class flag
- JOG A and PHRF in a combined start, using numeral pennant 2 as the class flag

2.2 There will be a 1 minute delay between the two starts.

### 3. Time Limits

3.1 All boats which have not started within 15 minutes of their start signal shall be scored DNS

3.2 The first boat must reach the windward mark within an hour, and finish the race within 2 hours, or the race shall be abandoned

3.3 RSS 35 is modified by: "Boats failing to finish within 60 minutes of the first boat in their class will be scored Did Not Finish"

### 4. Schedule of Races

4.1 Races are scheduled as outlined in the Race Calendar

4.3 The warning signal for the first start will be 1:00 PM

4.4 The warning signal for the second start will be made approximately 10 minutes after the last boat finishes the first race.

## Part D: Long Distance Series

**Note:** The long distance series races count towards the challenge race too!

### 1 The Courses

1.1 The courses are as follows:

- May 28: Kingsville Challenge Course from Appendix A
- June 25: Colchester Light Challenge Course from Appendix A
- July 30: Leamington Challenge Course from Appendix A
- August 27: Colchester Light Challenge Course from Appendix A
- Sept 24: Kingsville Challenge Course from Appendix A

### 2 The Start

2.2 All classes shall start at the same time, using numeral pennant 1 as the class flag

### 3 The Finish

3.1 Boats shall take their own finish times as they pass the finish mark. Finish times may be captured by taking a photo of the finish mark with a cell phone or using the time from a GPS receiver.

3.2 Boats shall submit their finish time, and other information such as the boat in front of or behind themselves to the Race Director via email within 4 hours of finishing.

### 4. Time Limits

4.1 All boats which have not started within 15 minutes of their start signal shall be scored DNS, excepting the Race Committee Boat, who must start within 25 minutes of the start signal.

### 5. Race Committee Scoring

5.1 The race committee boat may start the race as soon as all other competitors have crossed the start line, and will be given a 20 minute time allowance for their time. If the race committee boat does not start the race, they will be scored as per Part A, 10.3.

5.2 If the race committee boat starts, it shall start by sailing within 2 boat lengths of the start mark.



## Part E: Single Handed Race

### 1 Crew Limitations

1.1 A boats crew shall be limited to a single individual

### 2 The Course

2.1 The course shall be the Kingsville Challenge Course from Appendix A.

### 3 The Start

3.1 Both PHRF and JAM classes shall start at the same time.

### 4 The Finish

4.1 Boats shall take their own finish times as they pass the finish mark. Finish times may be captured by taking a photo of the finish mark with a cell phone or using the time from a GPS receiver.

4.2 Boats shall submit their finish time, and other information such as the boat in front of or behind themselves to the Race Director via email within 4 hours of finishing.

### 6. Manual Power

6.1 Autohelms and wind-vane devices for steering are permitted (this changes RRS 52)

## Part F: Sunset Race

### 1 The Course

1.1 The race committee shall signal the designated course from Appendix A over VHF, not later than 10 minutes before the warning signal.

### 2 The Start

2.1 The start order is:

- JOG B, using numeral pennant 1 as the class flag
- JOG A and PHRF in a combined start, using numeral pennant 2 as the class flag

2.2 There will be a 1 minute delay between the two starts.

2.3 The warning signal for the first start will be 8:00 PM

### 3 The Finish

3.1 Boats shall take their own finish times as they pass the finish mark. Finish times may be captured by taking a photo of the finish mark with a cell phone or using the time from a GPS receiver.

3.2 Boats shall submit their finish time, and other information such as the boat in front of or behind themselves to the Race Director via email within 4 hours of finishing.

### 3. Time Limits

3.1 All boats which have not started within 15 minutes of their start signal shall be scored DNS

3.2 The first boat must reach the windward mark within an hour, and finish the race within 2, or the race shall be abandoned

3.3 RSS 35 is modified by: "Boats failing to finish within 90 minutes of the first boat in their class will be scored Did Not Finish"

### 4 Safety

4.1 All boats must turn on their navigation lights for the duration of the race

4.2 All competitors must wear life jackets with strobe lights and a noise signaling device

4.3 If a competitor radios a man overboard all competitors must provide assistance; failure to do so shall result in disqualification from all racing at CIYC.

### 5. Manual Power

5.1 Autohelms and wind-vane devices for steering are permitted (this changes RRS 52)

## Part G: Odd Couple Race

### 1 Crew Limitations

1.1 A boats crew shall be limited to two people

### 1 The Course

1.1 The course shall be the Leamington Challenge Course from Appendix A.

### 2 The Start

2.1 PHRF and JOG classes shall start at the same time, using Numeral Pennant 1 as the class flag

2.2 The warning signal for the first start will be 11:00 AM

### 3 The Finish

3.1 Boats shall take their own finish times as they pass the finish mark. Finish times may be captured by taking a photo of the finish mark with a cell phone or using the time from a GPS receiver.

3.2 Boats shall submit their finish time, and other information such as the boat in front of or behind themselves to the Race Director via email within 4 hours of finishing.

## Part H: CIYC Challenge

The CIYC Challenge is a time challenge for two courses, where the fastest corrected time for each course over the sailing season wins the challenge. Boats may race the course whenever they would like, in whatever conditions they would like, as many times as they like.

### 1 The Course

1.1 The courses are the Challenge Courses as listed in Appendix A.

### 2 The Start

2.1 A boat starts by taking a photo of the start mark, from a distance of less than 2 boat lengths.

### 3 The Finish

3.1 Boats shall take their own finish times as they pass the finish mark. Finish times may be captured by taking a photo of the finish mark with a cell phone or using the time from a GPS receiver.

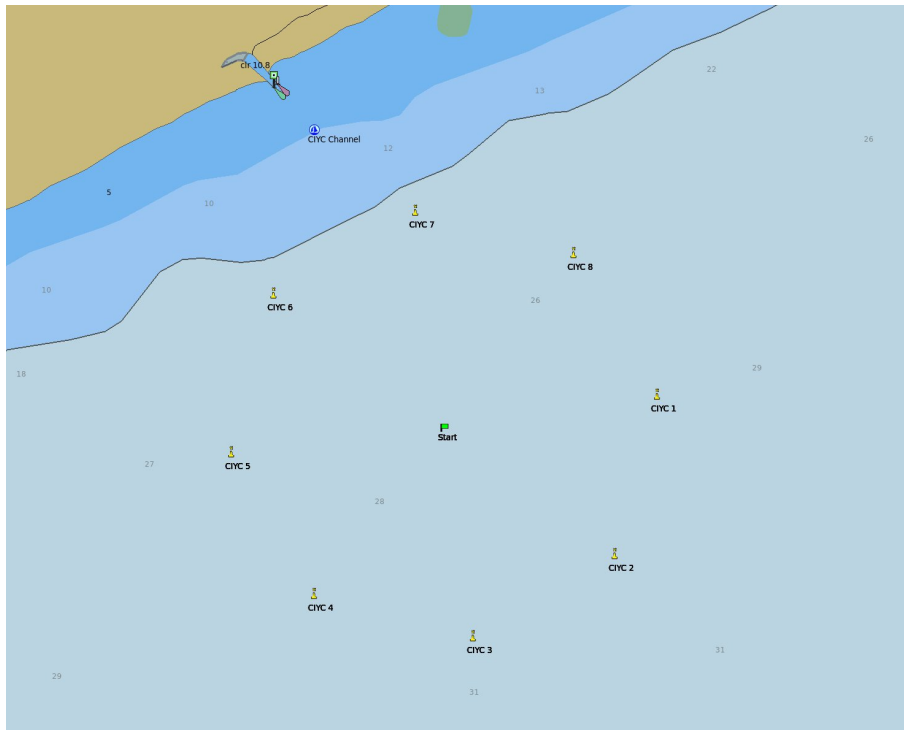
3.2 Boats shall submit their finish time, and other information such as a GPS track or photo of the turning mark to the Race Director via email within 24 hours of finishing.

### 4. Manual Power

4.1 Autohelms and wind-vane devices for steering are permitted (this changes RRS 52)

# Appendix A: CIYC Race Courses

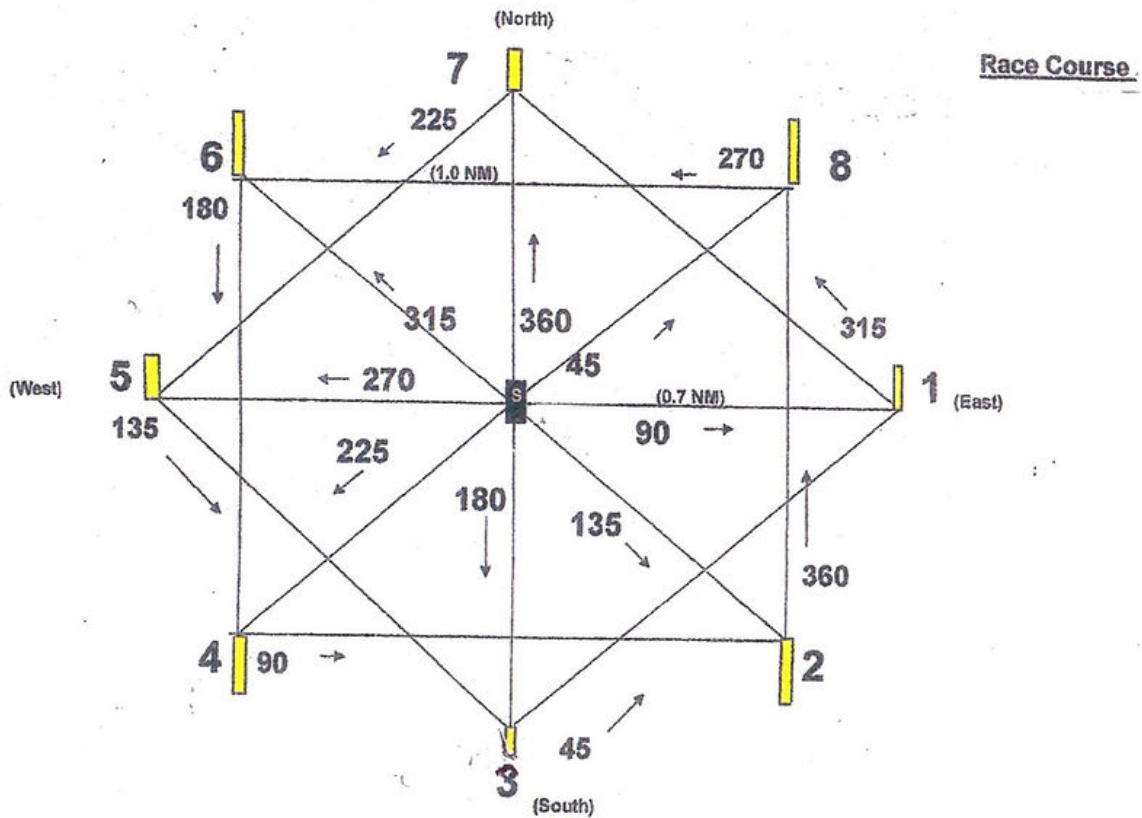
## CIYC Mark Locations



Mark	Latitude	Longitude
Start	41° 59.5000' N	082° 46.0000' W
1	41° 59.5940' N	082° 45.0670' W
2	41° 59.0750' N	082° 45.2510' W
3	41° 58.8070' N	082° 45.8740' W
4	41° 58.9440' N	082° 46.5710' W
5	41° 59.4070' N	082° 46.9330' W
6	41° 59.9250' N	082° 46.7480' W
7	42° 00.1940' N	082° 46.1250' W
8	42° 00.0560' N	082° 45.4310' W
Harbour Channel	42° 00.4726' N	082° 46.5702' W
Kingsville Channel mark	42° 01.2951' N	082° 43.5855' W
Colchester Lighthouse	41° 55.9562' N	082° 53.5231' W
Leamington Breakwater	42° 01.1969' N	082° 36.1476' W

Spring, Summer, Fall, Frostbite, Sunset Courses

Course	Marks	Distance
1	Start Line, 1, 7, 5, 1, 5, Finish at Start Line	6NMI
2	Start Line, 2, 8, 6, 2, 6, Finish at Start Line	6NMI
3	Start Line, 3, 1, 7, 3, 7, Finish at Start Line	6NMI
4	Start Line, 4, 2, 8, 4, 8, Finish at Start Line	6NMI
5	Start Line, 5, 3, 1, 5, 1, Finish at Start Line	6NMI
6	Start Line, 6, 4, 2, 6, 2, Finish at Start Line	6NMI
7	Start Line, 7, 5, 3, 7, 3, Finish at Start Line	6NMI
8	Start Line, 8, 6, 4, 8, 4, Finish at Start Line	6NMI



## Challenge Courses

Course	Marks	Distance
Kingsville Challenge Course	Start Line, Kingsville Chanel Mark, Finish at Start mark	5Nmi
Colchester Light Challenge Course	Start Line, Colchester Lighthouse, Finish at Start mark	13.2Nmi
Leamington Challenge Course	Start Line, Leamington Breakwater, Finish at Start mark	15Nmi

## Appendix B: Awards

Some awards are based on nominations. If there are no nominations for an award it won't be given out, so make sure you nominate anyone you feel should receive an award!

### Performance Awards

Award	Description
Spinnaker Overall	Awarded to overall first place PHRF for Spring, Summer, Fall, and Frostbite series
JOG A Overall	Awarded to overall first place JOG A for Spring, Summer, Fall, and Frostbite series
JOG B Overall	Awarded to overall first place JOG B for Spring, Summer, Fall, and Frostbite series
Line Honours Spinnaker	Awarded to the PHRF boat which takes the most line honours in the Spring, Summer, Fall, and Frostbite Series
Line Honours JOG A	Awarded to the JOG A boat which takes the most line honours in the Spring, Summer, Fall, and Frostbite Series
Line Honours JOG B	Awarded to the JOG B boat which takes the most line honours in the Spring, Summer, Fall, and Frostbite Series
Kingsville Challenge	Jointly awarded to the fastest PHRF and JOG boats in the Kingsville Challenge
Colchester Light Challenge	Jointly awarded to the fastest PHRF and JOG boats in the Colchester Light Challenge
Leamington Challenge	Jointly awarded to the fastest PHRF and JOG boats in the Leamington Challenge
Most Persistent Challenger	Awarded to the boat with the most attempts at the challenge courses
Speedboat Challenge	Awarded to the boat with the slowest average speed in a challenge race
Participation Award	Awarded to the boat which participates in the most events in a season
Most Improved Year over Year	Most improvement in overall results from the Spring, Summer, Fall, and Frostbite series from last year
CS World Championship	Best overall result for any CS boat in the Spring, Summer, Fall and Frostbite series
CIYC Labour Day Regatta	



### Nominated Awards

Most Social Boat	
Bubbles Award	
Best of Worst Line	
Oops and Win	
Best Crew	
Mother of the Crew	
Best Dressed	
Crash and Bleed Award	
Grinders Award	
Amateur Foredeck	
Confused Skipper	
Most Improved Spinnaker	
Rookie Crew	
Best Crew	
Best Sailed Boat	
Best Sportsman	
Hardluck Award	
Honourable Mention Award	
Steadfast Award	
We race because anyone can crew	
Leader Award	
Overboard Award	