



2024 CIYC Weeknight Racing  
Notice of Race

# 1 Rules

- 1.1 The event is governed by the rules as defined in *The Racing Rules of Sailing*.
- 1.2 RRS Appendix RV, Reduced Visibility replaces RRS Part 2 from sunset until sunrise<sup>1</sup>.
- 1.3 The prescriptions of Sail Canada shall apply<sup>2</sup>.
- 1.4 If there is a conflict between languages the English text takes precedence.

# 2 Sailing Instructions

- 2.1 The sailing instructions will be available on or before May 10th 2024 and will be posted online and on the official notice board.

# 3 Communication

- 3.1 The official notice board is located at Cedar Island Yacht Club between the main building and washrooms. Notices will also be posted to the CIYC website.
- 3.2 All boats shall carry a VHF radio capable of communicating on channels 16, 68, and 72.
- 3.3 On the water, the race committee will make courtesy broadcasts to competitors on VHF Radio, on channel 72.
- 3.4 From the first warning signal until the end of the last race of the day, except in an emergency, a boat shall not make voice or data transmissions and shall not receive voice or data communication that is not available to all boats.

# 4 Eligibility and Entry

- 4.1 The event is open to all boats owned by CIYC members, or any non-CIYC boat with proof of insurance and the approval of the CIYC Race Committee<sup>3</sup>.
- 4.2 All boats should have a valid PHRF certificate from a recognized rating authority. Boats which do not have a valid certificate will be assigned a rating based on PHRF-LE, EC-PHRF, PHRF-LO, Midwest PHRF, or other rating sources at the determination of the Scorer or CIYC Race Committee.
- 4.3 The PHRF handicapping system applies to all boats.

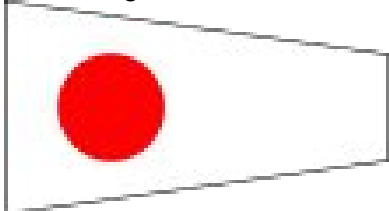
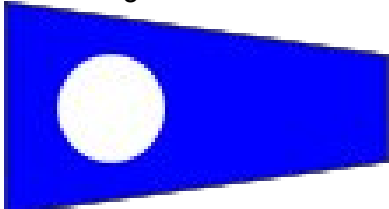
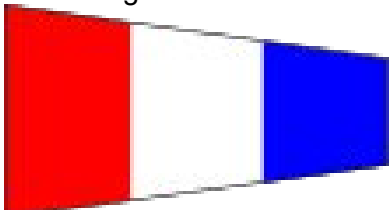
---

<sup>1</sup> See: Appendix RV, Reduced Visibility

<sup>2</sup> See: Sail Canada Prescriptions 2021

<sup>3</sup> The CIYC Race Committee is the organizing authority for all CIYC races

4.4 The classes are defined as follows:

Class	Ratings	Class Flag
PHRF Spinnaker	All PHRF ratings	Code Flag 1 
PHRF JOG <sup>4</sup> A	NFS PHRF Rating <= 200	Code Flag 2 
PHRF JOG B	NFS PHRF Rating >200	Code Flag 3 

4.5 All boats shall be scored as JOG unless they notify the Scorer<sup>5</sup> or CIYC Race Committee prior to the first race in a series. Boats may change class at the start of each series or event by informing the race director prior to the first race in a series or event. Boats which change classes will be disqualified from overall awards.

4.6 A list of all eligible boats and their class shall be published with the sailing instructions.

## 5 Schedule

5.1 Racing is scheduled as follows, with one race per day:

Series	Race	First Signal	Date
Spring	1	7:00 PM	May 15th
Spring	2	7:00 PM	May 22nd
Spring	3	7:00 PM	May 29
Spring	4	7:00 PM	June 5
Spring	5	7:00 PM	June 12
Spring	6	7:00 PM	June 19
Spring	7	7:00 PM	June 26
Summer	1	7:00 PM	July 3 – Wear red and white
Summer	2	7:00 PM	July 10
Summer	3	7:00 PM	July 17
Summer	4	7:00 PM	July 24
Summer	5	7:00 PM	July 31
Summer	6	7:00 PM	August 7

<sup>4</sup> “Jib or Genoa”

<sup>5</sup> As identified by the CIYC race committee

Summer	7	7:00 PM	August 14
Fall	1	7:00 PM	August 21
Fall	2	6:45 PM	September 4
Fall	3	6:45 PM	September 11
Fall	4	6:45 PM	September 18
Fall	5	6:45 PM	September 25
Fall	6	6:30 PM	October 2
Fall	7	6:30 PM	October 9

5.2 No warning signal shall be made more than 45 minutes after the time of the first signal.

## 6 Venue & Courses

6.1 NoR Addendum 1 shows the location of the racing areas.

6.2 NoR Addendum 2 lists the courses and their lengths.

## 7 Scoring

7.1 Each series shall be scored as provided in Appendix A of the RRS, with PHRF corrected times using time-on-distance with the published distances from NoR addendum 2.

7.2 1 race is required to be completed to constitute a series.

7.3 (a) When fewer than 5 races have been completed, a boat's series score will be the total of her race scores.

(b) When 5 or 6 races have been completed, a boat's series score will be the total of her race scores excluding her worst score.

(c) When 7 races have been completed, a boat's series score will be the total of her race scores excluding her two worst scores.

7.4 Rule A5.3 applies

7.5 Boats which receive a DSQ or DNE will be scored points equivalent to a DNC. This modifies RRS A5

7.6 For overall awards, RRS A2 is modified to exclude a boats 4 worst scores.

7.7 A boat acting as committee boat shall be scored RC and be scored her series average score, excluding other RC scores. This modifies RRS A5.

7.8 Any boat which is scheduled to be the committee boat and which does not go out without arranging a replacement will be scored DNE for that race. This modifies RRS A5.

## 8 Risk Statement

8.1 RRS 3 states: 'The responsibility for a boat's decision to participate in a race or to continue to race is hers alone.' By participating in this event each competitor agrees and acknowledges that sailing is a potentially dangerous activity with inherent risks. These

risks include strong winds and rough seas, sudden changes in weather, failure of equipment, boat handling errors, poor seamanship by other boats, loss of balance on an unstable platform and fatigue resulting in increased risk of injury. **Inherent in the sport of sailing is the risk of permanent, catastrophic injury or death by drowning, trauma, hypothermia or other causes.**

## 9 Insurance

- 9.1 Each participating boat shall be insured with valid third-party liability insurance with a minimum coverage of \$2 million CAD per incident or the equivalent.
- 9.2 CIYC's insurance will cover any boat acting as a committee boat while they are performing those duties.

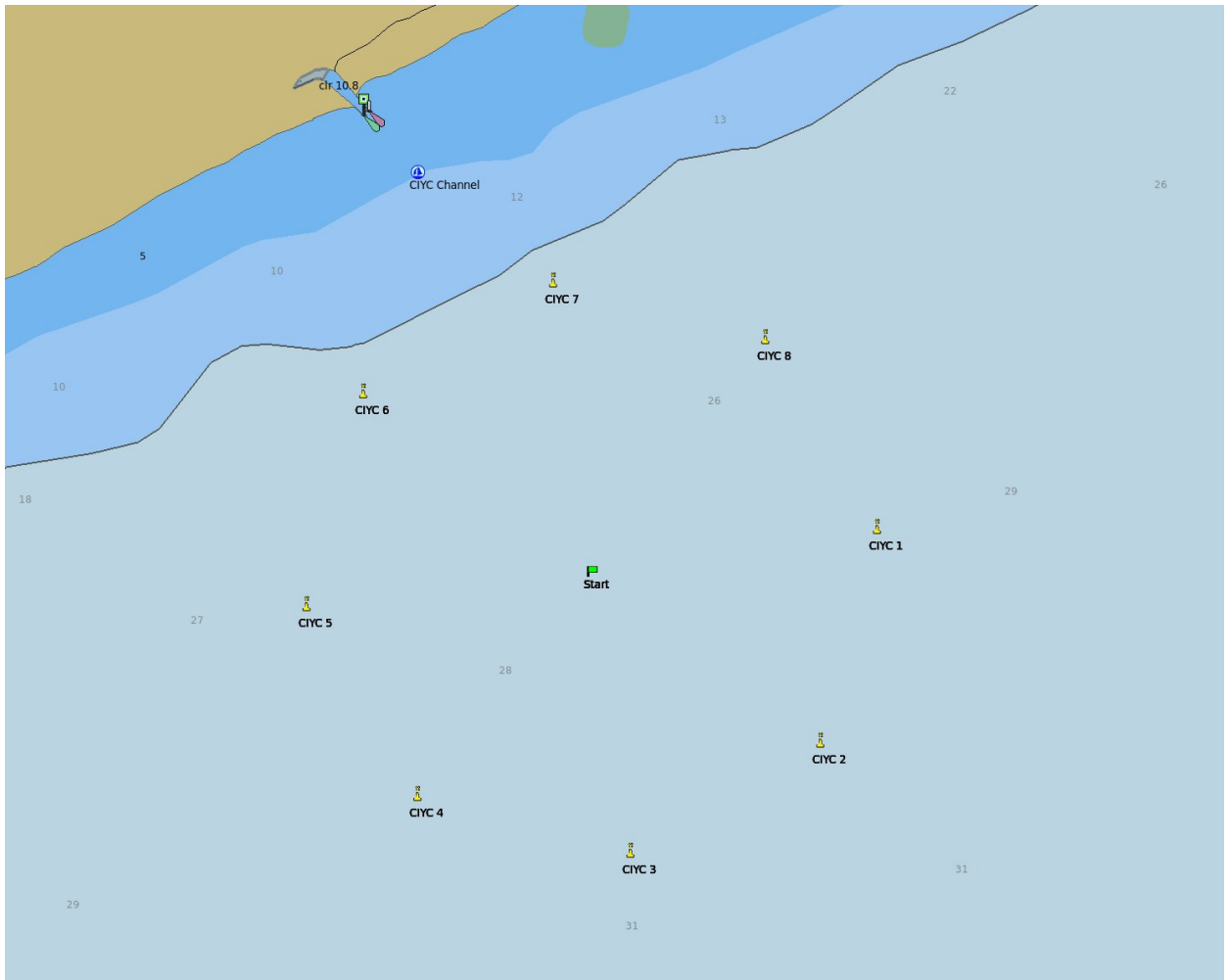
## 10 Prizes

- 10.1 Prizes shall be awarded as per NOR addendum 3. The CIYC Race Committee may award other prizes in addition to those listed.

## 11 Further Information

- 11.1 For further information please contact the Kevin Alles at [kevin.sailor@gmail.com](mailto:kevin.sailor@gmail.com)

# Addendum 1: Racing Area

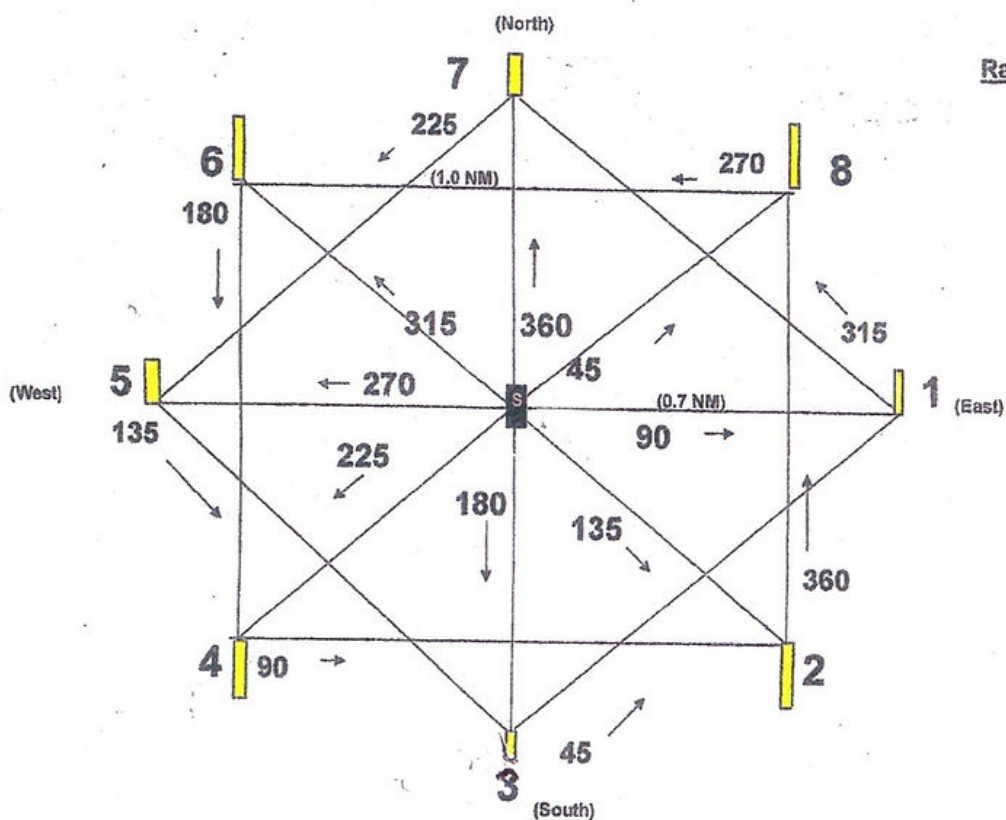


Mark	Description	Latitude	Longitude
Start/Finish Mark	White Mark	41° 59.5000' N	082° 46.0000' W
1	Yellow Mark	41° 59.5940' N	082° 45.0670' W
2	Yellow Mark	41° 59.0750' N	082° 45.2510' W
3	Yellow Mark	41° 58.8070' N	082° 45.8740' W
4	Yellow Mark	41° 58.9440' N	082° 46.5710' W
5	Yellow Mark	41° 59.4070' N	082° 46.9330' W
6	Yellow Mark	41° 59.9250' N	082° 46.7480' W
7	Yellow Mark	42° 00.1940' N	082° 46.1250' W
8	Yellow Mark	42° 00.0560' N	082° 45.4310' W
CIYC Channel		42° 00.4726' N	082° 46.5702' W

# Addendum 2: Courses

Course	Marks	Distance
1 R	Start Line, 1, 7, 5, G, 1, 5, Finish at Start Line	6.2NMi
1 S	Start Line, 1, 7, 5, Finish at Start Line	3.4NMi
2 R	Start Line, 2, 8, 6, G, 2, 6, Finish at Start Line	6.2NMi
2 S	Start Line, 2, 8, 6, Finish at Start Line	3.4NMi
3 R	Start Line, 3, 1, 7, G, 3, 7, Finish at Start Line	6.2NMi
3 S	Start Line, 3, 1, 7, Finish at Start Line	3.4NMi
4 R	Start Line, 4, 2, 8, G, 4, 8, Finish at Start Line	6.2NMi
4 S	Start Line, 4, 2, 8, Finish at Start Line	3.4NMi
5 R	Start Line, 5, 3, 1, G, 5, 1, Finish at Start Line	6.2NMi
5 S	Start Line, 5, 3, 1, Finish at Start Line	3.4NMi
6 R	Start Line, 6, 4, 2, G, 6, 2, Finish at Start Line	6.2NMi
6 S	Start Line, 6, 4, 2, Finish at Start Line	3.4NMi
7 R	Start Line, 7, 5, 3, G, 7, 3, Finish at Start Line	6.2NMi
7 S	Start Line, 7, 5, 3, Finish at Start Line	3.4NMi
8 R	Start Line, 8, 6, 4, G, 8, 4, Finish at Start Line	6.2NMi
8 S	Start Line, 8, 6, 4, Finish at Start Line	3.4NMi

G indicates that the start/finish line is to be used as a gate, and competitors must sail between the ends of the line.



# Addendum 3: Prizes

Some awards are based on nominations. If there are no nominations for an award it won't be given out, so make sure you nominate anyone you feel should receive an award!

Awards may be updated or not given out depending on participation.

## Performance Awards

Award	Description
Spinnaker Overall	Awarded to overall first place PHRF for Spring, Summer, Fall, and Frostbite series
JOG A Overall	Awarded to overall first place JOG A for Spring, Summer, Fall, and Frostbite series
JOG B Overall	Awarded to overall first place JOG B for Spring, Summer, Fall, and Frostbite series
Line Honours Spinnaker	Awarded to the PHRF boat which takes the most line honours in the Spring, Summer, Fall, and Frostbite Series
Line Honours JOG A	Awarded to the JOG A boat which takes the most line honours in the Spring, Summer, Fall, and Frostbite Series
Line Honours JOG B	Awarded to the JOG B boat which takes the most line honours in the Spring, Summer, Fall, and Frostbite Series
Participation Award – Mark Enns Trophy	Awarded to the boat which participates in the most events in a season



## Nominated Awards

Award	Description
Most Social Boat	
Bubbles Award	
Best of Worst Line	
Oops and Win	
Best Crew	
Mother of the Crew	
Best Dressed	
Crash and Bleed Award	
Grinders Award	
Amateur Foredeck	
Confused Skipper	
Most Improved Spinnaker	
Rookie Crew	
Best Crew	
Best Sailed Boat	
Best Sportsman	
Hard Luck Award	
Honourable Mention Award	
Steadfast Award	
We race because anyone can crew	
Leader Award	