	<p style="text-align: center;">Wednesday PHRF Cedar Island Yacht Club May 14th to October 8th, 2025 Kingsville, Ontario</p> <p style="text-align: center;">NOTICE OF RACE (NoR) v1.2</p>
---	---

1. RULES

- 1.1 The event is governed by the rules as defined in The Racing Rules of Sailing.
- 1.2 RRS Appendix RV, Reduced Visibility replaces RRS Part 2 from sunset until sunrise
- 1.3 If there is a conflict between languages the English text takes precedence.

2. SAILING INSTRUCTIONS

- 2.1 The sailing instructions will be available after 19:00 on April 16th on the CIYC Website and on the CIYC Official Notice Board.

3. COMMUNICATION

- 3.1 The online official notice board is located at: <https://www.cedarislandyachtclub.ca/copy-of-race-schedule-and-results-1>
- 3.2 All boats larger than 20 feet in length shall carry a VHF radio capable of communicating on channels 16, 68, and 72.
- 3.3 On the water, the race committee will make courtesy broadcasts to competitors on VHF radio. The channel will be stated in the SIs.
- 3.4 While racing, except in an emergency, a boat shall not make voice or data transmissions and shall not receive voice or data communication that is not available to all boats.

4. ELIGIBILITY AND ENTRY

- 4.1 The event is open to all boats eligible to race PHRF. Boats without a valid PHRF certificate will be assigned a rating by the scorer, which may include a 10 second penalty. CIYC ratings from prior years will be accepted as-is.
- 4.2 Classes are defined as follows:
PHRF: All PHRF ratings with Spinnakers
JOG A: NFS PHRF ratings <= 200
JOG B: NFS PHRF ratings > 200
Blue: NFS PHRF, all ratings - for beginners
- 4.3 Eligible Boats may enter by completing the entry form and submitting it to CIYC or online by completing <https://forms.gle/ngPj5qJaJPmnr4177>, before the first race in which they participate.
- 4.4 To be considered an entry in the event, a boat shall complete all registration requirements.

5. **FEES**

- 5.1 There are no entry fees for this event, however you may need to pay a fee for a PHRF certificate.

6. **CREW LIMITATIONS**

- 6.1 There are no limits on crew

7. **SCHEDULE**

- 7.1 Dates of Racing:

Spring Series:

May 14

May 21

May 28

June 4

June 11

June 18

June 25

July 2nd

Summer Series:

July 2nd

July 9

July 16

July 23

July 30

August 6

August 13

Fall Series:

August 20

September 3

September 10

September 17

September 24

October 1

October 8

- 7.2 There will be one race each race night.
7.3 The scheduled time of the warning signal for each race is 1900.
7.4 No warning signal will be made after 1930.

8. **VENUE**

- 8.2 NoR Addendum 1 shows the location of the racing area.

9. **SCORING**

- 9.1 Each series shall be scored as provided in Appendix A of the RRS, with PHRF corrected times using time-on-distance with the published course distances.

- 9.2 1 race constitutes a series
- 9.3 (a) When fewer than 5 races are sailed, a boat's series score will be the total of her race scores.
- (b) When 6 races are sailed, a boat's series score will be the total of her race scores, excluding her worst score.
- (c) When 7 or more races are sailed, a boat's series score will be the total of her race scores, excluding her two worst scores.
- 9.4 Rule A5.3 applies.
- 9.5 Boats which receive a DSQ or DNE will be scored points equivalent to a DNC. This modifies RRS A5.
- 9.6 For overall awards, RRS A2 is modified to exclude a boat's 4 worst scores.
- 9.7 A boat acting as the race committee signal vessel shall be scored RC and be scored her series average score, excluding other RC scores. This modifies RRS A5.
- 9.8 Any boat which is scheduled to be the committee boat and which does not go out without arranging a replacement will be scored DNE for that race. This modifies RRS A5.
- 9.9 In the event of a significant mistake by the committee boat before or during a race, that race will be scored abandoned at the discretion of the race committee, without a protest hearing.

10. **RISK STATEMENT**

- 10.1 RRS 3 states: 'The responsibility for a boat's decision to participate in a race or to continue to race is hers alone.' By participating in this event each competitor agrees and acknowledges that sailing is a potentially dangerous activity with inherent risks. These risks include strong winds and rough seas, sudden changes in weather, failure of equipment, boat handling errors, poor seamanship by other boats, loss of balance on an unstable platform and fatigue resulting in increased risk of injury. Inherent in the sport of sailing is the risk of permanent, catastrophic injury or death by drowning, trauma, hypothermia or other causes.

11. **INSURANCE**

- 11.1 Each participating boat shall be insured with valid third-party liability insurance with a minimum cover of \$2,000,000 CAD per incident or the equivalent.

12. **PRIZES**

- 12.1 Prizes will be awarded as follows:
- Spinnaker Overall: Awarded to overall first place PHRF for Spring, Summer, Fall, and Frostbite series.
- JOG A Overall: Awarded to overall first place JOG A for Spring, Summer, Fall, and Frostbite series.
- JOG B Overall: Awarded to overall first place JOG B for Spring, Summer, Fall, and Frostbite series.
- Line Honours Spinnaker: Awarded to the PHRF boat which takes the most line honours in the Spring, Summer, Fall, and Frostbite Series.

Line Honours JOG A: Awarded to the JOG A boat which takes the most line honours in the Spring, Summer, Fall, and Frostbite Series.

Line Honours JOG B: Awarded to the JOG B boat which takes the most line honours in the Spring, Summer, Fall, and Frostbite Series.

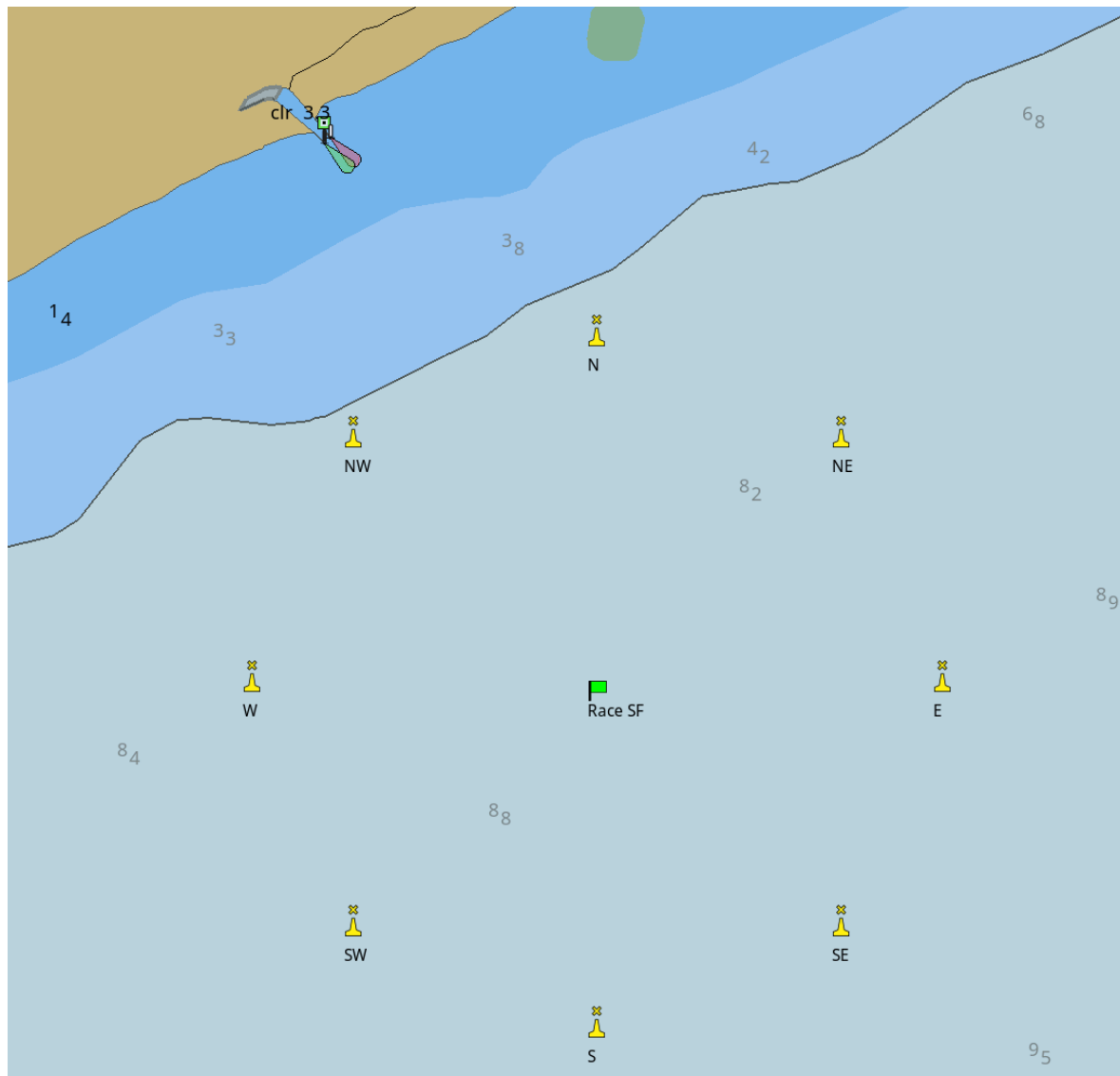
Participation Award – Mark Enns Trophy: Awarded to the boat which participates in the most events in a season.

12.2 Additional prizes may be awarded.

13. **FURTHER INFORMATION**

13.1 For further information please contact the CIYC Race Officer at raceofficerciyc@gmail.com.

Addendum 1: Racing Area



Mark	Description	Latitude	Longitude
Start/Finish Mark	Yellow Mark	41.991667 N	82.766667 W
N	Yellow Mark	42.003339 N	82.766667 W
NE	Yellow Mark	41.99992 N	82.755603 W
E	Yellow Mark	41.991666 N	82.751022 W
SE	Yellow Mark	41.983413 N	82.755605 W
S	Yellow Mark	41.979995 N	82.766667 W
SW	Yellow Mark	41.983413 N	82.777729 W
W	Yellow Mark	41.991666 N	82.782312 W
NW	Yellow Mark	41.99992 N	82.777731 W

Download at https://files.xnor.ca/CIYC/marks_and_courses/Marks.gpx